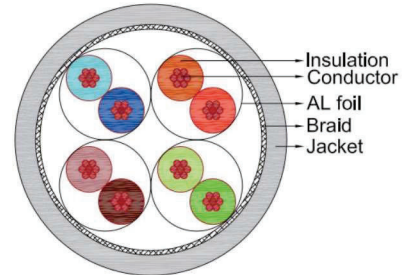
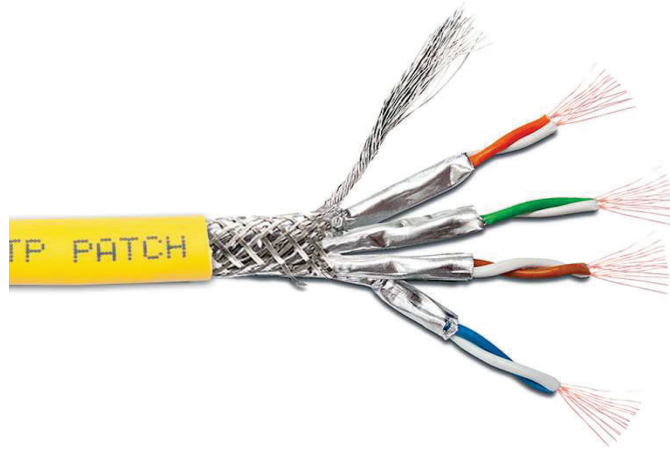


Cat8 S/FTP Stranded Network Patch Cord Cable AWG 24/7
Model: ON-210212



Network Twisted Pair Patch Raw Cable, Cat 8 S/FTP AWG 24/7 Stranded Copper Wires, LSZH/PVC Jacket



High Frequency Performance	Category	Category8, CLASS I				
	Standard Compliance	IEC61156-9&10,ANSI/TIA 568C.2-1, ISO/IEC11801				
Flame Retardant Standard	Standard Compliance	UL444 CM, IEC60332-1-2, IEC60332-3 part24				
LSOH Standards	IEC60754-2, IEC61034-1, IEC61034-2					
Environmental Compliance	RoHS					
Marking on Sheath	PVC CM	S/FTP PATCH CABLE 24AWG 4PR CM 75°C (UL) rated ANSI/TIA 568C.2-1 CAT.8 & ISO/IEC TR 11801-9901 Class I XXXXXX-X XXXXM				
	LSOH	S/FTP PATCH CABLE 24AWG 4PR LSOH ANSI/TIA 568C.2-1 CAT.8 & ISO/IEC TR 11801-9901 Class I XXXXXX-X XXXXM				
	Customization Available					
Example	Cable Sheath Type		Cable Sheath Color		Packaging	
	LSZH		YELLOW		500m/Wooden Reel	
Part Number	Cable Sheath Type	Part Number	Color-RAL	Part Number	Length,Packaging	Part Number
	PVC CM	P	Yellow-RAL 1021	YL	100M,PE Roll	100
					305M,Wooden Reel	305
					500M,Wooden Reel	500
LSOH	H	Yellow-RAL 1021	YL			

Cat8 S/FTP Stranded Network Patch Cord Cable AWG 24/7

Model: ON-210212



Technical Datas

Conductor	Material	Bare Copper	
	Structure	24AWG, 0.195 ± 0.003mm	
Insulation	Material	Foam PE	
	Structure	1.40mm, Skin-Foam-Skin	
Foil Screen	Material	Aluminum/PET	
	Thickness	35/15µm	
Braid	Material	Tinned copper	
	Structure	0.1mm x 6 x 16, Min. 45% coverage	
Rip cord	N/A		
Drain Wire	Material	N/A	
	Structure	N/A	
Sheath	Material	PVC CM or LSOH	
	Thickness	0.51mm	
	OD	7.4± 0.2mm	
Pulling Tension	Max. 100N		
Bending Radius (without load)	Min. 8 x Cable Diameter		
Temperature Range	Installation Temperature	0 to 50°C	
	Storage Temperature	-20 to 70°C (Under static conditions)	
	Operation Temperature	-20 to 60°C (Under static conditions)	
Conductor Resistance @20°C	Max. 8.76Ohms/100m	Resistance Unbalance @20°C	Between pairs: 4% Max.
Dielectric Strength	1200 V dc or 850 V ac for 2secs		
Mutual Capacitance	5.6 nF/100m @1kHz	Insulation Resistance @20°C, Test Voltage 100V-500V DC	Min. 5000 Mohms/km
Transfer Impedance (Max.)	N/A		
Coupling Attenuation (<1GHz)	Min. 55dB @100MHz	Max. Capacitance Unbalance (Pair to Ground @20°C)	330 pF/100m @1kHz
Mean Characteristic Impedance	100 Ohms ± 5 Ohms @100MHz		
Max. Delay Skew @20°C	45 nsec/100m @ 100MHz	Nominal Velocity Propagation	72.5%

Transmission Characteristics (ISO 11801 & Channel Class 1)

FREQ MHz	Attenuation max. dB/100m	RL (min. dB at 20°C)	NEXT (min. dB)	PS-NEXT (min. dB)	ACRF (min. dB)	PSACRF (min. dB)	TCL (min. dB)	Prop. Delay (max. ns)
1	0.84	19	73.5	70.5	72	69	30	0.176
16	3.12	18	53.9	50.9	47.9	44.9	39.5	0.168
100	7.92	14	40.5	37.5	32	29	16	0.166
250	12.72	11.6	33.6	30.6	24	21	9.2	0.166
500	18.36	9.8	28.4	25.4	18	15	4.1	0.166
600	20.28	9.3	26.2	23.2	16.4	13.4	3	0.166
1000	27	8	19.6	16.6	12	9	3	0.166
1600	35.04	8	12.9	9.9	7.9	4.9	3	0.165
2000 ffs	40.08	8	9.6	6.6	6	3	3	0.165

All performance based on 30m channel according to ISO 11801 Channel Class I request, the channel link includes Linkwylan Cat.8 solid cable, Cat.8 keystone jack and Cat.8 field termination plugs.

Item code	Length/Color	Cable Jacket
LW-CA8S24H-100/YL	100m Roll, Yellow	LSZH
LW-CA8S24H-305/YL	305m Wooden Reel, Yellow	
LW-CA8S24H-100/YL	500m Wooden Reel, Yellow	